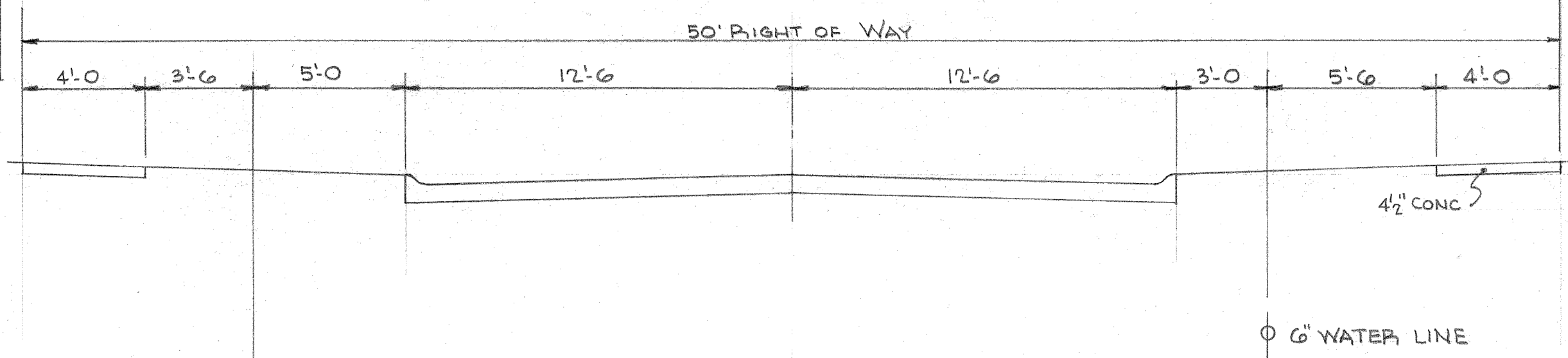
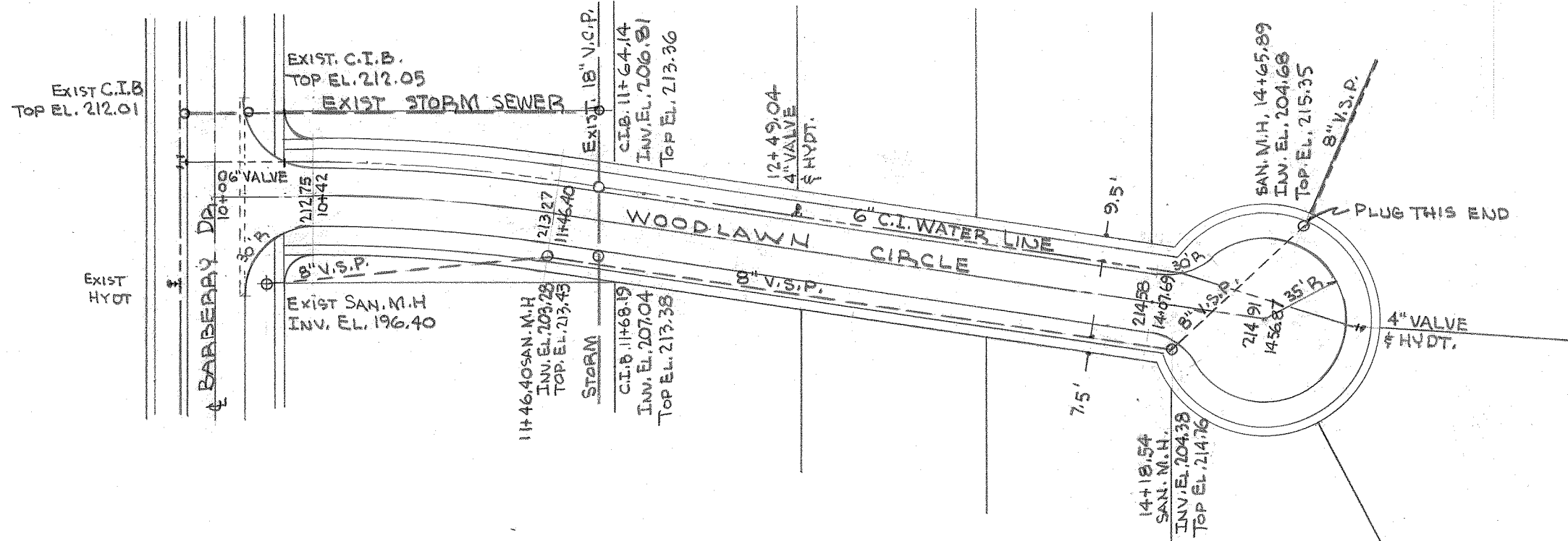


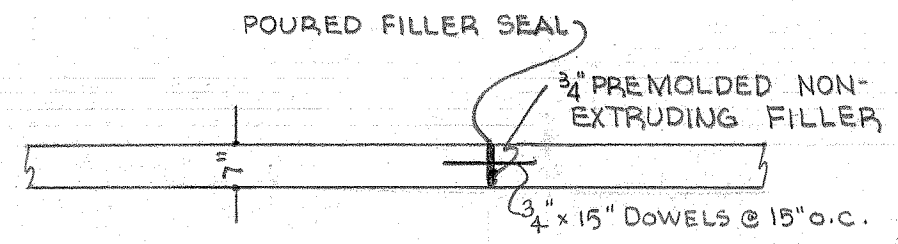
CONCRETE STREET SECTION
SCALE 3/8" = 1'-0"



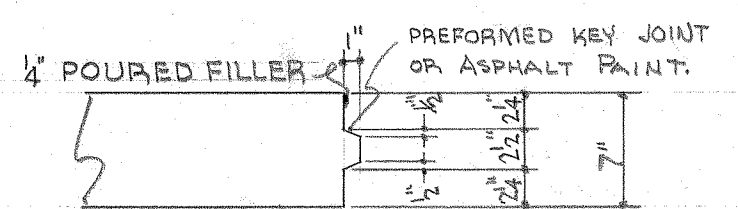
IMPROVEMENT SECTION
SCALE 1/4" = 1'-0"



PLAN & PROFILE
SCALE HORZ 1" = 60'
VERT 1" = 6'



EXPANSION JOINT DETAIL
SCALE 3/8" = 1'-0"



KEYED JOINT DETAIL
SCALE 1" = 1'-0"

- NOTES:
1. CONCRETE DESIGN STANDARDS ARE BASED ON $f'_c = 3000$ P.S.I.
 2. USE 6/2 S.A.X CONCRETE W/ LIMESTONE AGGREGATE.
 3. MAX. WATER CONTENT 6 GAL. PER SACK.
 4. USE 5% AIR ENTRAINED CONCRETE.
 5. WET BASE BEFORE PLACING CONCRETE.
 6. CLEAN ADJACENT CONCRETE SURFACE AND THE CENTER LINE JOINT AFTER SECOND HALF OF STREET IS POURED.
 7. BOX OUT FOR CURB INLET BASINS.
 8. WATER LINE SHALL BE A.S.A. CLASS 23 BELL TITE ENAMEL LINED WITH FULL CEMENT LININGS ON FITTINGS.
 9. SANITARY SEWERS SHALL BE CLASS C-13 VITRIFIED CLAY PIPE.
 10. SANITARY SEWER JOINTS SHALL BE BITUMINOUS MATERIAL.
 11. CONSTRUCTION JOINTS SHALL BE KEY JOINTED.
 12. TRENCHES UNDER PAVEMENT SHALL BE 90% COMPACTED.

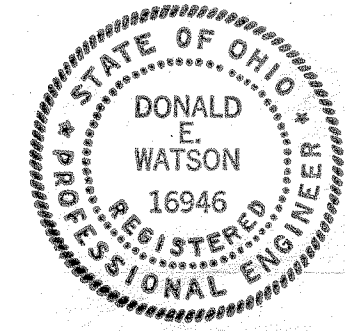
PROFILE of WOODLAWN CIRCLE
& STREET DETAILS
WOODLAWN ESTATES SUBDIVISION No 2

SCALE: AS NOTED

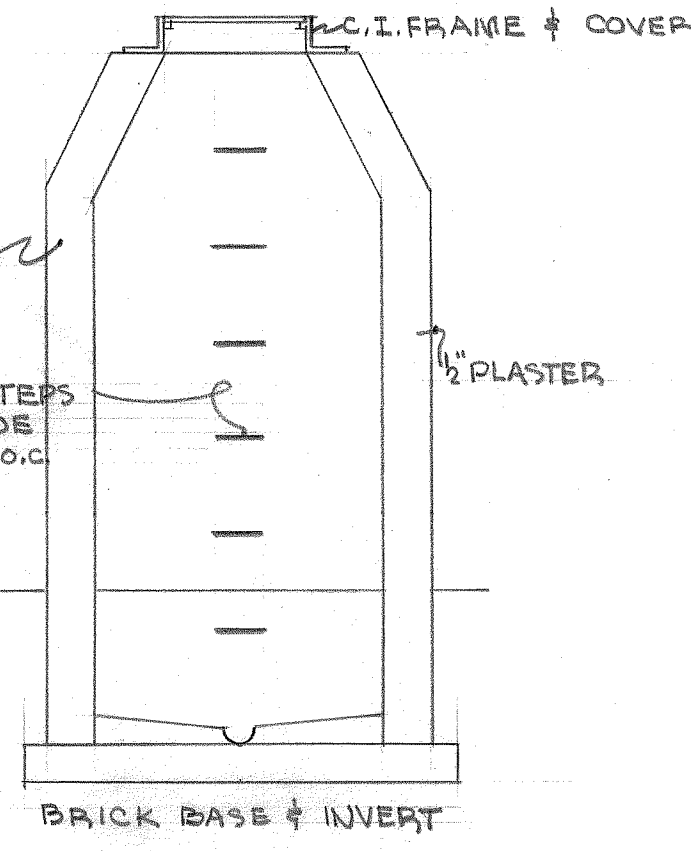
JUNE 1961

PLANS APPROVED BY THE CITY OF BEREA
THIS ___ DAY OF ___ 1961.

Walter J. ... - ENGINEER



Donald E. Watson
DONALD E. WATSON
REGISTERED PROFESSIONAL
ENGINEER & SURVEYOR



MANHOLE & C.I.B. DETAIL
SCALE 3/8" = 1'-0"