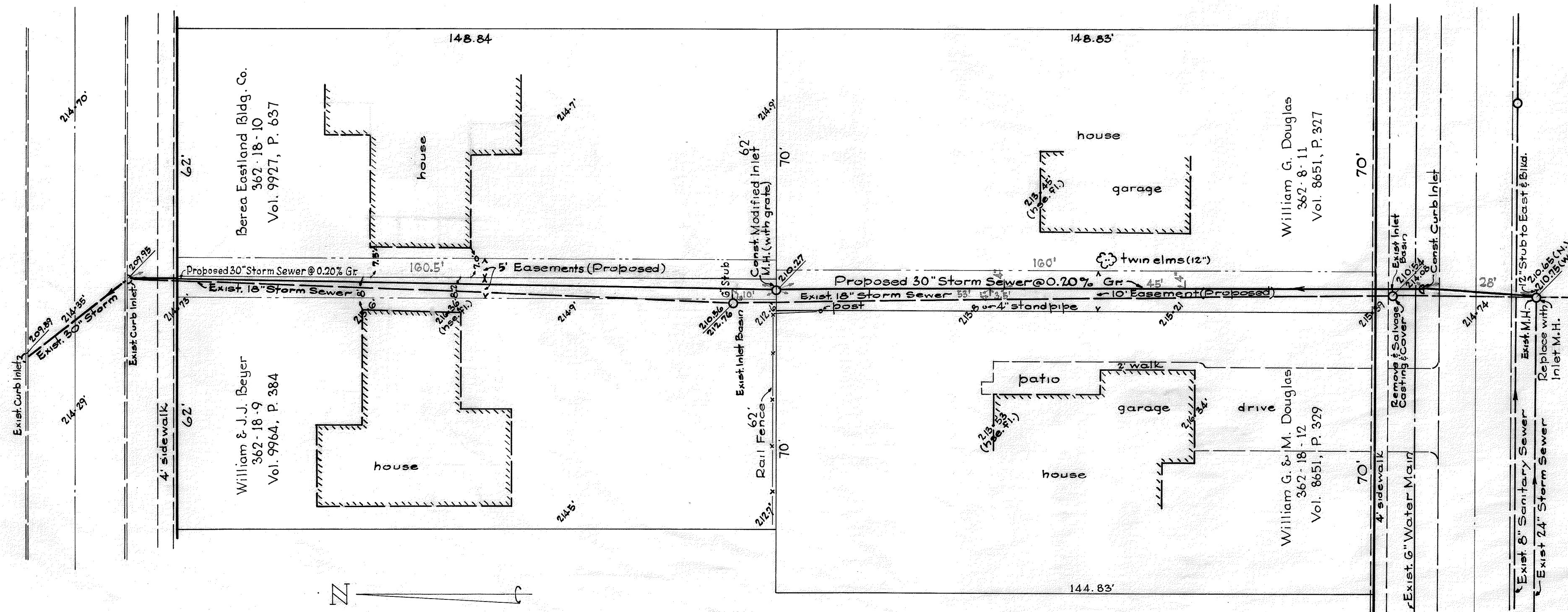
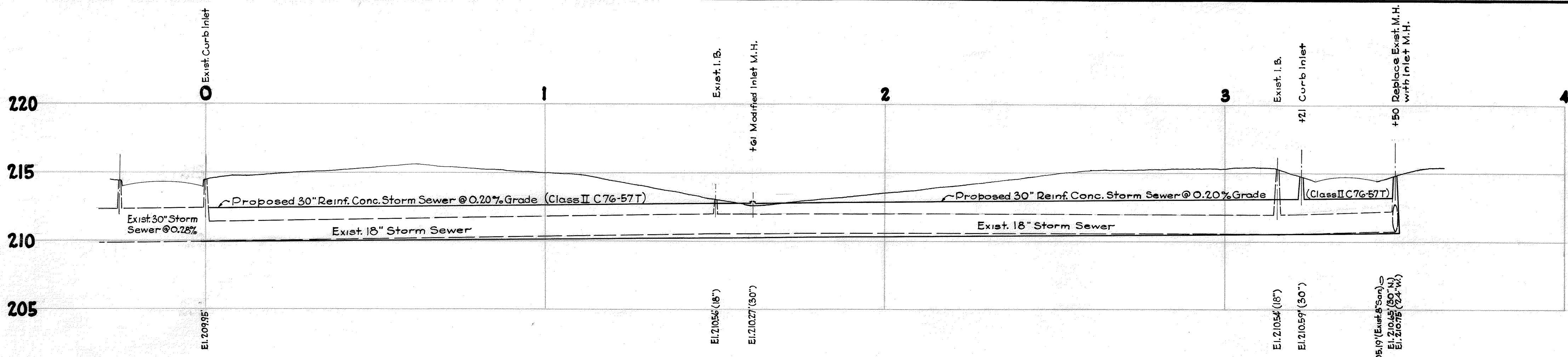


FOURTH AVE. 50' 24' conc. pavt.



B.M.s: West Bolt of N.W. Corner
 Maple Ave. & Fifth Ave. Elev. 220.75'
 West Bolt of Hyd. Corner
 Eastland Road & Fifth Ave. Elev. 219.60'



Resolution of Necessity No. 1960-74 Passed Oct. 3, 1960
 Ordinance to Proceed No. _____ Passed _____

Measurements in red as constructed.

REV. 11-11-60 Owners Names+Parcel Nos.

PLAN
 OF
STORM DRAIN IN EASEMENT
 BETWEEN
FOURTH AVE. & FIFTH AVE.
 THE CITY OF BEREA, OHIO

SCALE: 1"=20' H. F.B. 509 D. 148 ORDER No. 3290 OCT. 1960
WARREN J. ROOT
 AND ASSOCIATES
 CIVIL ENGINEERS & SURVEYORS